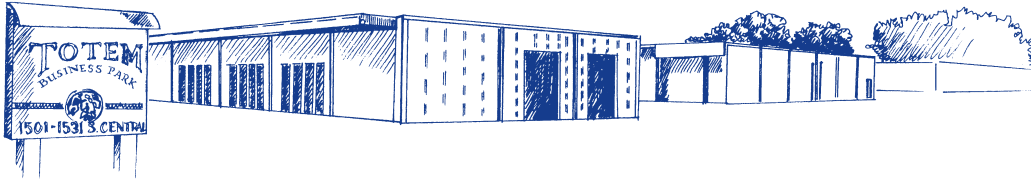
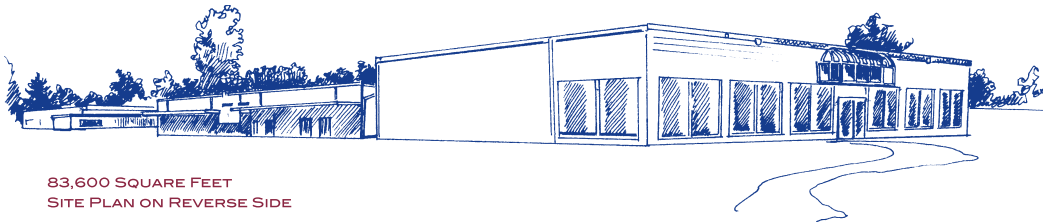


TOTEM BUSINESS PARK

1501 SOUTH CENTRAL AVENUE, KENT, WASHINGTON



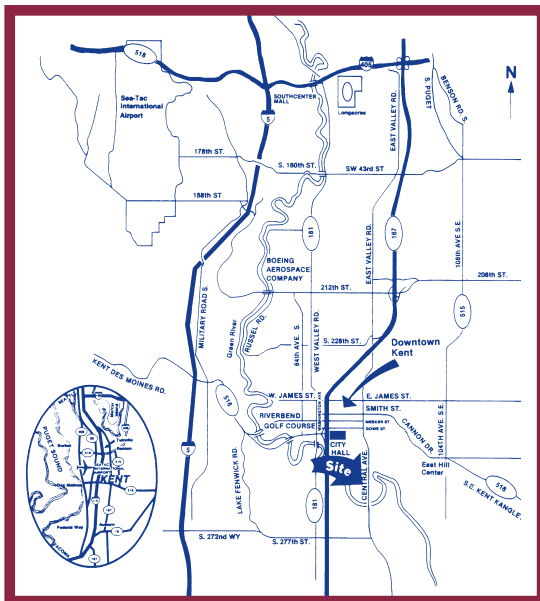
INDUSTRIAL SPACE



83,600 SQUARE FEET
SITE PLAN ON REVERSE SIDE

RETAIL SPACE

Five-building development located on South Central Avenue, features easy access to I-5 and the Valley Freeway.



THE RealEstate COMPANY

1511 SOUTH CENTRAL AVENUE, KENT, WA 98032

www.scottrice.net

**WAREHOUSE
DISTRIBUTION
MANUFACTURING
RETAIL**

Building Features

- 83,600 Square Feet
- Divisible to 2,800 s.f.
- High Visibility
- Abundant Parking
- 14' - 16' Clearance
- Grade Level Access

Property Represented by

SCOTT RICE

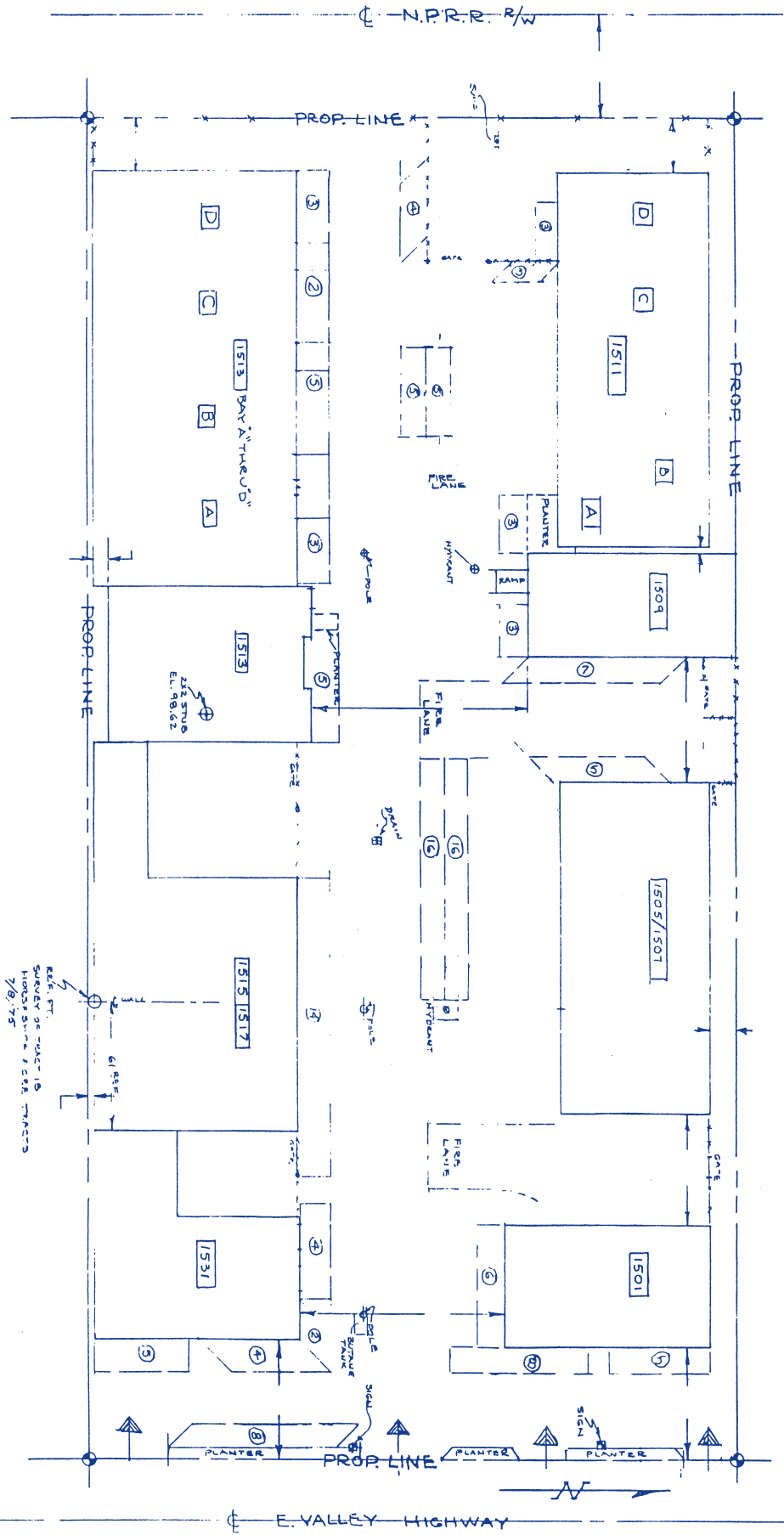
tel 253 / 852 / 5327

fax 253 / 852 / 0058

rsrice@hotmail.com

www.scottrice.net

The information contained herein has been given to us by the owner of the property or obtained from sources we deem reliable. We have no reason to doubt its accuracy, but we do not guarantee it. The value of this property is dependent upon the assumptions made above, the tax bracket, and other factors which your legal counsel should evaluate. The perspective buyer should carefully verify each item relating to this property and all information contained herein.



GENERAL LAYOUT - TOTEM INDUSTRIAL PARK | AUG-1992

- LEGEND:
- PROP. LINE
 - 1517 BLOC/BAY
 - 7 PARKING SPACES
 - FENCE
 - ▲ STREET ENTRY
- SCALE - 1" = 32'

DATE: 7/8/75
 SURVEY OF TRACT 10
 HORIZONTAL & VERTICAL
 7/8/75